

## ELR 1/25-240

This product has been replaced by a newer version.

Order No.: 2964694



<http://eshop.phoenixcontact.de/phoenix/treeViewClick.do?UID=2964694>

1-phase electronic load relay, input: 4 - 32 V DC, output: 24 - 280 V  
AC/ 25 A

### Commercial data

EAN	4017918147617
Pack	1 Pcs.
Customs tariff	85364900
Weight/Piece	0.2651 KG
Catalog page information	Page 140 (IF-2005)

<http://www.download.phoenixcontact.com>  
Please note that the data given here has been taken from the online catalog. For comprehensive information and data, please refer to the user documentation. The General Terms and Conditions of Use apply to Internet downloads.

### Technical data

#### Input data

Input name	Device supply
Nominal supply voltage	24 V DC
Input voltage range in reference to $U_N$	0.2 ... 1.3
Typical input current at $U_N$	8 mA
Switching threshold "0" signal in reference to $U_N$	< 0.04
Switching threshold "1" signal in reference to $U_N$	> 0.2
Transmission frequency	30 Hz
Typical response time	10 ms

Typical turn-off time	10 ms
Status display	LED green

**Output data, load relay**

Output name	AC output
Nominal output voltage	230 V AC
Nominal output voltage range	24 V AC ... 280 V AC
Periodic peak reverse voltage	1000 V (Periodic peak reverse voltage)
Mains frequency	50 Hz 60 Hz
Continuous load current	25 A (see derating curve)
Load current	Min. 100 mA
Leakage current	3 mA
Residual voltage	1.8 V
Surge current	400 A (t = 8.33 ms, @ 25°C)
Max. load value	720 A <sup>2</sup> s
Name of protection	RC element
Protective circuit/component	RC element
Name of protection	Surge protection

**Connection data**

Type of connection	Screw connection
Stripping length	8 mm
Conductor cross section solid min.	0.2 mm <sup>2</sup>
Conductor cross section solid max.	2.5 mm <sup>2</sup>
Conductor cross section stranded min.	0.2 mm <sup>2</sup>
Conductor cross section stranded max.	2.5 mm <sup>2</sup>
Conductor cross section AWG/kcmil min.	24
Conductor cross section AWG/kcmil max	14
Screw thread	M 3

**General data**

Length	98 mm
Width	22.5 mm
Height	105 mm
Test voltage input/output	4 kV

Ambient temperature (operation)	-20 °C ... 80 °C
Mounting position	Panel mounting on horizontal DIN rail
Assembly instructions	Can be aligned with > 40 mm spacing
Operating mode	100% operating factor
Name	EMC regulations
Standards/regulations	EN 61000-4-4
	EN 61000-4-5

**Certificates / Approvals**

Approval logo

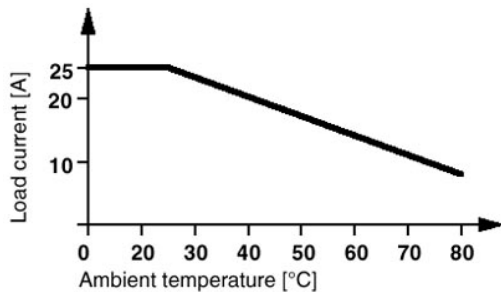


requested approbations

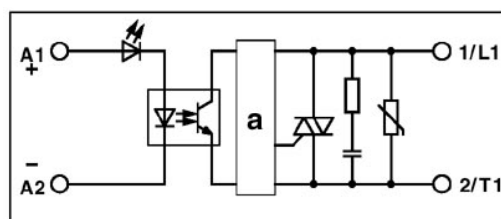
Certification	CUL, GOST, UL
---------------	---------------

**Drawings**

Diagram



Circuit diagram



a = zero voltage switch

**Address**

PHOENIX CONTACT GmbH & Co. KG  
Flachmarktstr. 8  
32825 Blomberg, Germany  
Phone +49 5235 3 00  
Fax +49 5235 3 41200  
<http://www.phoenixcontact.de>



© 2008 Phoenix Contact  
Technical modifications reserved;